

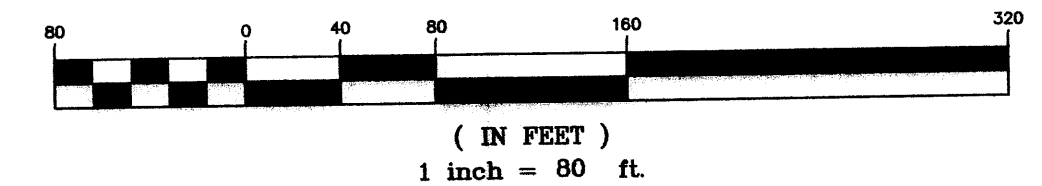
NORTHWEST CORNER SECTION 13 TOWNSHIP 4 SOUTH, RANGE 2 WEST SALT LAKE BASE AND MERIDIAN.

WEST SIXTEENTH SECTION 12/13, TOWNSHIP 4 SOUTH, RANGE 2 WEST SALT LAKE BASE & MERIDIAN.

SEE DETAIL "A"

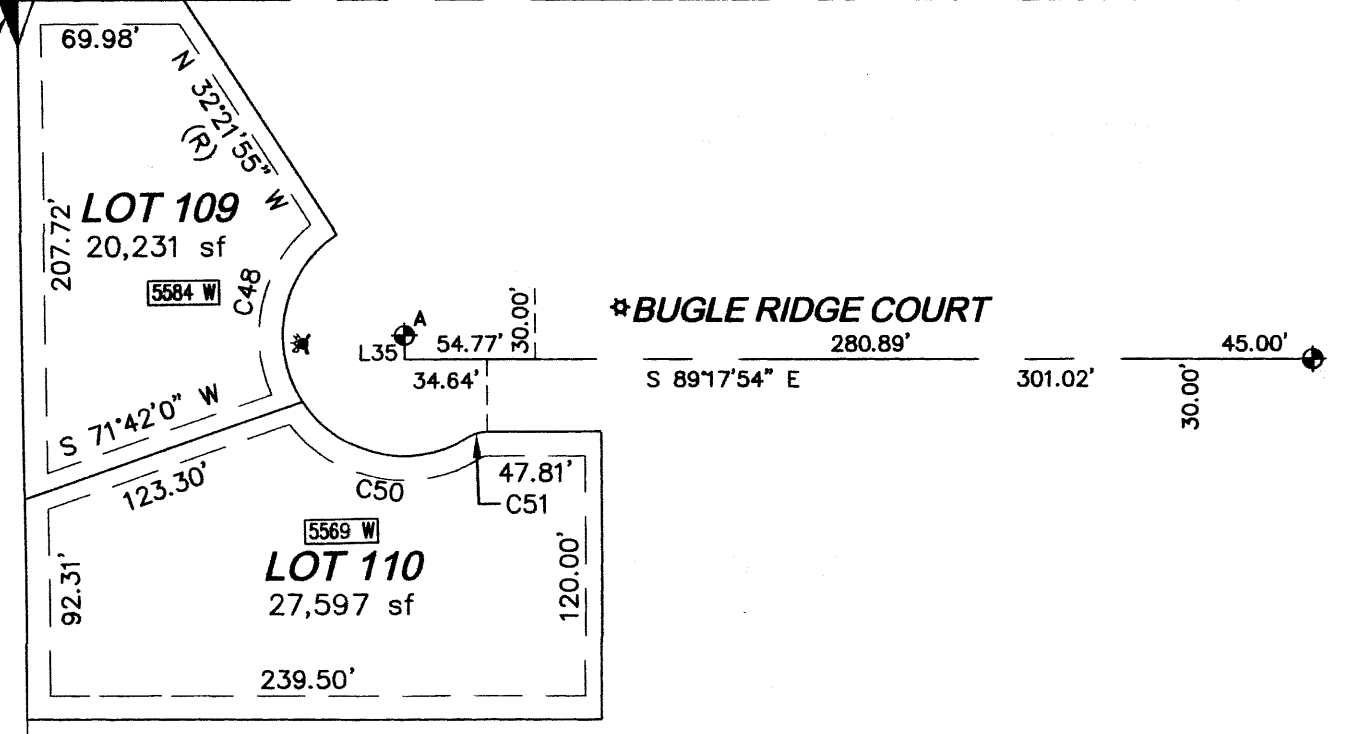
NORTH QUARTER CORNER SECTION 13, TOWNSHIP 4 SOUTH, RANGE 2 WEST SALT LAKE BASE & MERIDIAN

GRAPHIC SCALE



MONUMENTS	LENGTH	BEARING
A-B	380.79	S87°47'33"E
B-C	421.32	S89°17'54"E
C-G	486.64	S14°04'57"W
G-H	189.62	S39°21'08"W
H-F	112.28	N07°55'23"W
F-E	240.40	N30°33'06"W
E-B	273.11	N81°52'33"W
D-E	370.08	N84°20'33"E
H-J	281.97	S85°12'44"W
J-K	182.97	S12°48'34"E
K-L	307.44	S05°27'32"E

RADIAL LINE	BEARING
R-1	N42°33'36"E
R-2	N81°10'48"W
R-3	N49°11'22"E
R-4	N37°47'38"E
R-5	N57°14'08"W
R-6	N75°13'33"W
R-7	N82°43'06"W



C48	50.00'	78.88'	50.32'	90°22'01"
C49	DELETED	DELETED	DELETED	DELETED
C50	50.00'	77.46'	48.93'	88°45'45"
C51	15.00'	8.43'	4.33'	32°12'15"

NORTH SIXTEENTH SECTION 14/13, TOWNSHIP 4 SOUTH, RANGE 2 WEST SALT LAKE BASE & MERIDIAN.

WEST QUARTER CORNER SECTION 13 TOWNSHIP 4 SOUTH, RANGE 2 WEST SALT LAKE BASE & MERIDIAN

**GENERAL NOTE:**

PARCEL "A" AND "B" SHOWN HEREON ARE SUBJECT TO A NONEXCLUSIVE UTILITY EASEMENT IN THEIR ENTIRETY.

**LOOKOUT RIDGE SUBDIVISION PHASE 1 Amended FINAL PLAT**

LOCATED IN THE NORTHWEST 1/4 AND THE SOUTHWEST 1/4 OF THE NORTHWEST 1/4 OF SECTION 13, TOWNSHIP 4 SOUTH, RANGE 2 WEST, S.L.B. & M. HERRIMAN CITY, SALT LAKE COUNTY, UTAH.



1111 East Draper Parkway  
Suite 103  
Draper, Utah 84020  
Tel: 801-748-1190  
Fax: 801-748-1119

RECORDED # 10437116

STATE OF UTAH, COUNTY OF SALT LAKE, RECORDED AND FILED AT THE REQUEST OF:

LOOKOUT RIDGE LLC  
DATE: 5/27/18 TIME: 3:29 PM BOOK: 2008P PAGE: 136  
SALT LAKE COUNTY RECORDER #62.00 FEE

SHEET NO.

